

St. Helena's Weekly Newsletter

Dear Families,

Last Sunday was a lovely, sunny, autumnal day and Mrs Cawthorn and I joined several of our families at Forest Church. Yet again we had a lovely time in the green cathedral-like churchyard. We spent time thinking about the Harvest and the fruits of our farmers' labour - we even had a go at grinding corn into flour and took home our own hand-made bread dough.

It's our Harvest Festival on Friday October 8th and we can return to St Helena's Church where some of the Y6 will lead the service. It will be lovely to be together again in Church and hopefully some of you will be able to join us on that afternoon. Harvest gifts of tinned products, especially meats, soup, fruit and baked beans would be gratefully received so that we can pass them on to the Alford Food Bank. They also need tea and coffee too.

Harvest time always makes me marvel at the miracle of life and growth in all living things. How do the crops grow despite ever-changing weather patterns? Recently, our school has been chosen to undertake a national Mental Health and Well-Being training programme with the Church of England Education Board and at our first workshop, the renowned therapist Louise Bomber, compared the power and nurturing impact of positive childhood experiences to be like a farmer spreading fertiliser on his crops:

"What goes into our roots affects the shoots and fruits."

I am so proud of our efforts at home and in school to offer the children the best of experiences, helping them flourish and grow - thank you.



A couple of reminders . . .

PARKING: Please do not park in the staff car park. This is something which we always ask, but particularly important at the moment, as we are using the gates around the car park as entrances to school, so there are a lot of people in the car park. Please help us keep your children safe!

Also, we have received a letter from the Parish Council asking that parent/carers do not park on the village green. It is appreciated that parking is difficult in a small village but we do ask that you consider the residents of Willoughby too - Thank you.

PHOTOGRAPHS: If you are not using the online service for ordering the school photographs please return your orders to the school office by Wednesday 29th September, 2021 - Thank you.

LABELLING CLOTHES: Mrs Seymour is finding several items of clothing scattered about but, unfortunately, with no name so they cannot be returned to the owner. Please ensure you put your child's name in their clothing - Thank you.

Lots of visits coming up . . .



Reception children visit Tattershall Farm Park

The Reception children will be visiting Tattershall Farm Park on Wednesday 6th October 2021. The children will leave school at 9:15am and will return for the end of the school day.

They will need school uniform, warm waterproof coat, sensible shoes, packed lunch and plenty to drink.

We, kindly, ask for a donation of £19.50 towards the cost of this visit. Payments can be made via Parentmail or please complete the slip below and return to the school office by Monday 4th October.

Reception children visit Tattershall Farm Park.

I/We enclose a contribution of £19.50 towards the visit to Tattershall Farm Park.

Child's name

Signed

Date

Y5/6 visit Yorkshire Wildlife Park

Year 5 and 6 children will be visiting Yorkshire Wildlife Park on Tuesday 28th September. They will be walking around the park and will take part in a hands on educational session (observing a range of animal artefacts and will have the chance to touch at least one animal). The children will need to wear school uniform, sensible footwear for walking and a waterproof coat. They will also require a packed lunch and plenty to drink. They will be leaving school at approximately **7:45am** and are expected to return at **4:30pm**.

We, kindly, ask for a contribution of £21.00 towards the cost of this visit. Payments can be made via Parentmail or at the school office. There are still consent forms outstanding which need to be returned to the school office by Monday 20th September.

Y1 and Y2 visit Alford Fire Station

As part of their studies of "The Great Fire of London" , Year 1 and Year 2 children will be visiting Alford Fire Station during the school day on Thursday 14th October 2021.

We, kindly, ask for a donation of £2.85 towards the cost of transport for this visit. Payments can be made via Parentmail or please complete the slip below and return to the school office by Monday 11th October.

Y1 and Y2 visit Alford Fire Station.

I/We enclose a contribution of £2.85 towards the cost of the visit to Alford Fire Station for

Child's name

Signed

Date

Y3 and Y4 walk to Alford.

On Thursday 7th October, 2021 Year 3 and Year 4 will be walking in the footsteps of Captain John Smith who used to walk from Willoughby to school in Alford (across fields!). The children are required to wear uniform on top, however, can wear non uniform trousers. They will also need to wear a good walking shoes (as they are going across fields) and a waterproof coat. Please can the children bring a drink of water, a spare pair of shoes and a carrier bag, they will also need a small back pack to carry this in. The children will be returning by coach and we, kindly, ask for a donation of £2 towards the cost of the transport. Payments can be made via Parentmail or please complete the slip below and return to the school office by Monday 4th October.

Y3 and Y4 walk to Alford.

I/We enclose a contribution of £2.00 towards the transport cost of the return from the walk to Alford.

Child's name

Signed

Date

Year 2 Swimming

Year 2 will be swimming this year starting on Friday 5th November, 2021. until Friday 25th March 2021. The cost per week is £6.45, and we kindly ask for the following donations for the 3 terms as follows:

Term 2 - 5th November until 17th December - £45.15.

Term 3 - 7th January until 11th February - £38.70.

Term 4 - 25th February until 25th March - £32.25

Payments can be made via Parentmail or at the school office.

If the children would like to bring a small snack and a drink for after swimming they are welcome to.

Year 2 Swimming - Term 2.

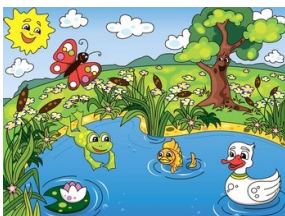
I/We enclose a contribution of £45.15 towards the cost of swimming for Term 2.

Child's name

Signed

Date

On the afternoon of Monday 27th September, year 2 children are walking to Mrs Seymour's house. They will be exploring natural habitats around her garden and pond.



Sunnyside Garden

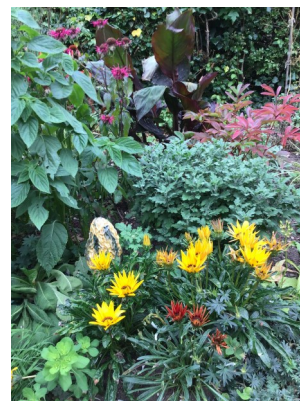
I have been watching the bunches of grapes grow in the greenhouse and the green ones are now ready for eating. A neighbour gave me the large flower pot containing the grape vine before she moved out of the village. I was very surprised to find both green and black grapes as she had put two different types of vine in the same pot. A lovely surprise when the grapes appeared.

I have been checking the flower border every few days to break off any dying flowers. This means more flowers will open so that the plants look nice into the autumn.

A couple of weeks ago I planted some flower seeds in seed trays in the greenhouse. These are already popping through the soil and beginning to grow. These are flowers for the garden next summer and will stay in the greenhouse all winter.

When you are out on your walks, look for acorns, rose hips and other autumn fruits. Very soon you may find conkers on the path if you are walking down Church Lane towards the church. Enjoy your walks around the village this term.

From Mrs Fulwood.



Governors

The Governing Board held its first meeting of the year last Monday when each governor was allocated their roles for the coming year. Margaret Fulwood was elected as chairperson, with Rev Sherine Angus and Hayley Groves as joint vice chairs.

Kitty Hamilton has had to stand down from the Governing Board due to other commitments and we are very grateful for the work she has done leading the finance committee during the past couple of years as well as being a vice chairperson - Thank you Kitty.

As a result, the Governing Board is seeking to elect a new parent governor and you will find details further on in the newsletter. Margaret Fulwood and Joanne Askew will be available on the playground at the end of school on Monday 27th September. If any parent would like to find out more about the duties of a governor please come and talk to us. Alternatively message Linda Storr who can pass on your messages to us for answering.

It is a delight for members of the Governing Board to meet in person again and to be able to plan our visits to school so that we can talk to the staff and children as well as see their work. Lockdowns and Covid has really helped us all to appreciate our lives in and around Willoughby. Thank you to the parents and staff who have helped our children through the last eighteen months.

Here are a few of the roles the governors have undertaken:

Finance Committee : Alana Boxall (Chair), Ruth Russell-Jones, Kate Roberts, Steve Eyre, Sue Belton and Karen Rinfret (Associate Governor with no voting rights).

Exclusions, attendance, behaviour of pupils: Margaret Fulwood, Pupil Premium: Hayley Groves, GDPR: Ruth Russell-Jones, Early Years: Joanne Askew, Safeguarding: Sherine Angus and Alana Boxall, Health & Safety: Richard Butler, SEND: Hayley Groves, Staff Welfare & Wellbeing: Steve Eyre, English: Hayley Groves, Science and Technology: Joanne Askew, Humanities: Ruth Russell-Jones, Arts: Alana Boxall and Religious Education: Richard Butler.

Diary Dates 2021/2022

SEPTEMBER

27th Y2 visit Mrs Seymour's pond.
JSTC, Alford Open Day and Evening
28th Year 5/6 visit Yorkshire Wildlife Park

OCTOBER

6th Reception children visit Tattershall Farm Park
7th Y3 & Y4 follow John Smith's footsteps to school in Alford (Church).
7th 5:30-8:30pm QEGS, Alford Open Evening
8th 2pm Harvest Festival in Church
13th Y1 Parents' meetings
14th Y1 & Y2 visit Alford Fire Station
17th Forest Church at St Helena's Church
18th-20th Year 4/5/6 Residential at Caythorpe
21st End of Term 1.
22nd Staff Training Day

NOVEMBER

1st School Opens - Term 2
4th St Helena's Open Day and Open Evening
5th Y2 swimming starts.
18th Flu immunisations.
18th James Mayhew, author, visiting Y2

DECEMBER

6th-9th Y5 and Y6 Bikeability
17th 2pm Christingle Service
17th End of Term 2
20th Staff Training Day

JANUARY 2022

4th School Opens—Term 3

FEBRUARY

11th End of Term 3
21st School Opens - Term 4

MARCH

31st End of Term 4

APRIL

1st Staff Training Day
20th School Opens—Term 5

MAY

27th End of Term 5

JUNE

6th School Opens—Term 6

JULY

22nd End of Term 6

We are collecting the Morrisons' Gardening Vouchers. Please bring to the school office.

Thank you!



Reminder . . .

Due to Health and Safety, children cannot wear jewellery during PE. This includes all ear-rings and, unfortunately, they cannot be taped either. Thank you.

Reception children need 13 dingle dangle scarecrow floppy hats. Can anyone help please?

St Helena's Church of England Primary School

"Together, We Strive For Excellence"

23 September 2021

Dear Parent

ELECTION OF A PARENT GOVERNOR

A vacancy has arisen for a Parent Governor at this school, and it is therefore necessary to hold an election.

The governing body, with the headteacher, has overall responsibility for the running of the school. Governing bodies have three main roles:-

- Ensuring clarity of vision, ethos and strategic direction;
- Holding the headteacher to account for the educational performance of the school and its pupils; and
- Overseeing the financial performance of the school and making sure its money is well spent.

Governors are not expected to be involved in the day-to-day management and administration of the school, but rather to set strategic plans for the school and to provide the Headteacher with guidance on general principles. However, Governors need a strong commitment to the role, the curiosity to question, analyse and the willingness to learn. In particular, at this time the Board needs someone with good financial knowledge. It would be expected that you made a visit to school at least once a year.

It should be noted that an elected Parent Governor is appointed for a 4 year term and may continue in office even though their child may have left the school part way through their four year term of office. Our full governing body usually meets 6 times a year and there is currently one committee for finance which usually meets 3 times a year.

If you are interested in being a candidate please complete the slip attached, proposed and seconded by a current parent of the school and forward it to the Returning Officer at the school, to arrive not later than 10am on Wednesday 13th October 2021. It is recommended that candidates supply a short personal statement (**not more than 50 words**) about themselves for circulation to voters.

*Main Road
Willoughby
Alford
LN13 9NF*



*Headteacher: Mrs S.M. Belton
Tel: (01507) 462367 Fax: (01507) 462628
email: admin@st-helenascofe.lincs.sch.uk
www.st-helenascofe.lincs.sch.uk*

St Helena's Church of England Primary School

"Together, We Strive For Excellence"

23 September 2021

Candidates should be aware of certain disqualification clauses relating in particular to bankruptcy and criminal convictions. If you are in any doubt about your eligibility to stand for election please contact the Returning Officer who will be able to supply you with further details.

If the number of candidates exceeds the number of vacancies, you will be sent voting slips and details about the electoral process via your child. The results of the election will be announced in the school newsletter.

Any queries relating to this election should be made to the Returning Officer at the school.

Yours sincerely

Mrs S Belton
Returning Officer

*Main Road
Willoughby
Alford
LN13 9NH*



*Headteacher: Mrs S.M. Belton
Tel: (01507) 462367 Fax: (01507) 462628
email: admin@st-helenascofe.lincs.sch.uk
www.st-helenascofe.lincs.sch.uk*

*St Helena's Church of England Primary School
Willoughby*

Parent Governor Nominations

To the Returning Officer of St Helena's Church of England Primary School,
Willoughby. (Closing date 10am on Wednesday 13th October 2021)

(Please use Block Capitals)

I
(Full Name)

of
(Address)

wish to stand for election as a Parent Governor of St Helena's CE Primary
School, Willoughby.

This nomination is proposed by
(Full Name)

and

seconded by
(Full Name)

Who are both parents of pupils registered at St Helena's CE Primary School,
Willoughby.

You have the opportunity to write a statement overleaf to set out (a) evidence
of the extent to which you possess the skills and experience the governing body
desires; (b) your commitment to undertake training to acquire or develop the
skills to be an effective governor; if seeking re-election, details of your
contribution to the work of the governing body during your previous term of
office; and (d) how you plan to contribute to the future work of the governing
body.

Candidates should be aware of certain disqualification clauses relating in
particular to bankruptcy and criminal convictions. If you are in any doubt about
your eligibility to stand for election please contact the Returning Officer who
will be able to supply you with further details.

Personal Statement *(100 words max)*

Signed.....

Date.....